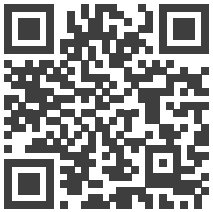


Quick Start Guide

Fronius Smart Meter TS 65A-3



[manuals.fronius.com/
html/4204260349](https://manuals.fronius.com/html/4204260349)

**OPERATING
INSTRUCTION**



Technical Data - General	
Nominal voltage (three-phase) / Operating range	208 - 400 V / 166,4 - 480 V
Nominal frequency / Tolerance	50 - 60 Hz / 45 - 65 Hz
Nominal / Maximum current	5 A / 65 A
Powerfactor range (EN/IEC 62053-21, EN/IEC 62053-23)	aktiv $\cos\phi$ 0.5 ind to 0.8 cap reaktiv $\sin\phi$ 0.5 ind to 0.5 cap
Permitted ambient temperature	from -25° to +65°C
Mounting	DIN rail 35 mm
IP range (EN60529)	IP51 / IP20 (Front / Connections)

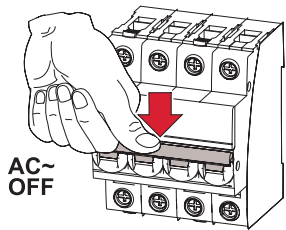
Communication	
Standard	RS485 - 3 conductors
Protocol	Modbus RTU
Min. Softwareversion	Datamanager 2.0: 3.16.1 / Fronius Symo Hybrid: 1.16.1 / Fronius GEN24: 1.12.1

Screw terminal	
Measuring input / neutral line	1 - 16 mm ²
Output (data communication)	min. 0,05 mm ²
Recommended torque	Measuring input: max. 2,8 Nm Output: max. 0,4 Nm

Detailed, country-specific warranty terms are available on: www.fronius.com/solar/warranty

AC~

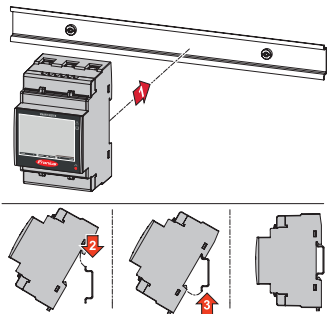
1



AC~ OFF

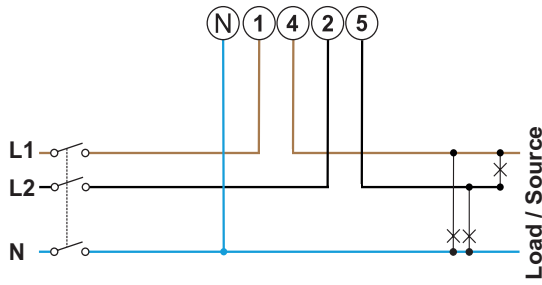
Mounting

2



Power Wiring

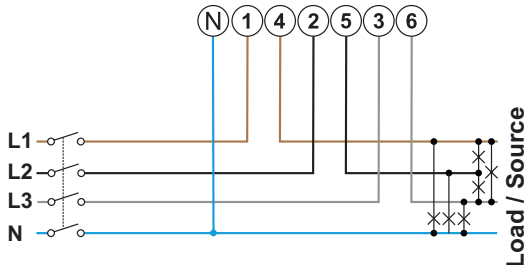
3a



2 Phases, 3 Wires

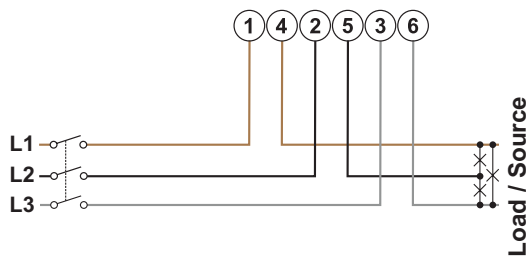
CU Wire	
●	1-16 mm ²
●	1-10 mm ²
⊕	2,8 Nm
⊖	0,4 Nm
In	Out
L1	1 4
L2	2 5
L3	3 6
N	N N

3b



3 Phases, 4 Wires

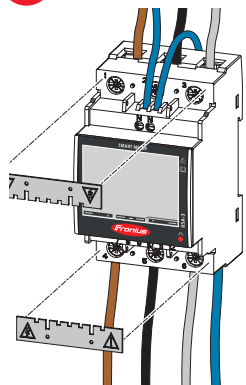
3c



3 Phases, 3 Wires

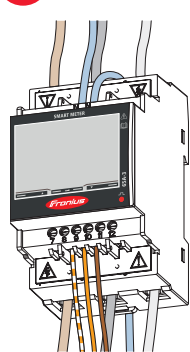
Protective Covers

4



Data Wiring

5

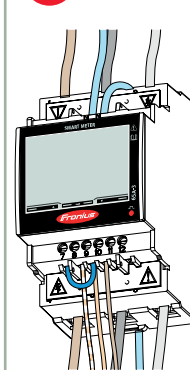


CU Wire
(min CAT5)
≥0,05 mm²
0,4 Nm

SnapInverter		GEN24	
Smart Meter	Modbus	Smart Meter	Modbus
8	D+	8	M0+
9	D-	9	M0-
10	-	10	GND

Terminating Resistor

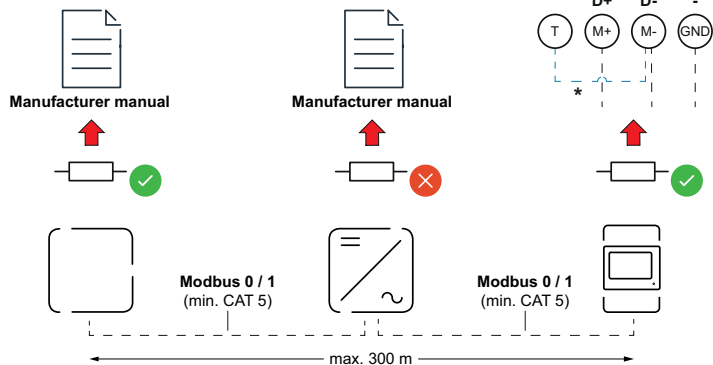
6



CU Wire
≥0,05 mm²
0,4 Nm

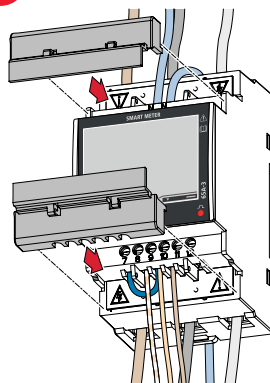
Bypass (cable)	
T	M-
7	9

7

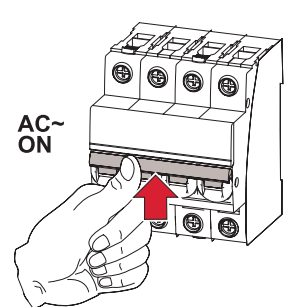


Close & Commissioning

8

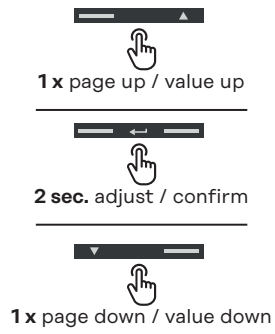


9

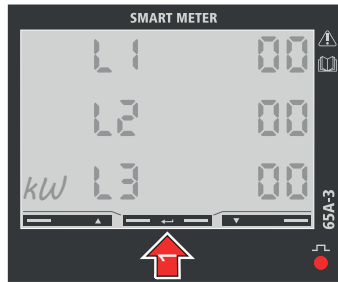


AC~ ON

10

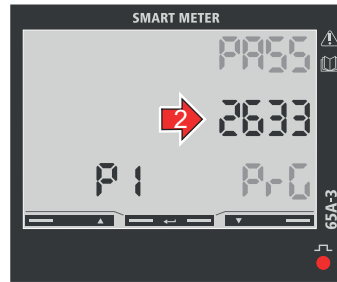


11



12

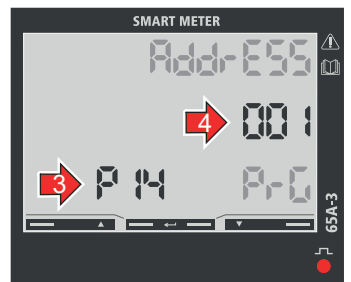
Password



Factory default: **2633**

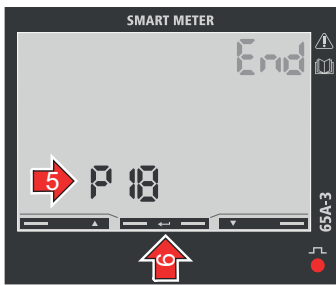
13

Modbus Address



Factory default: **001**

14



Exit

15



Fronius Solar.start



download / update

